

# Welcome to monValu (the world of Valu)

Dr. Mónica Edwards-Schachter  
6th July 2022

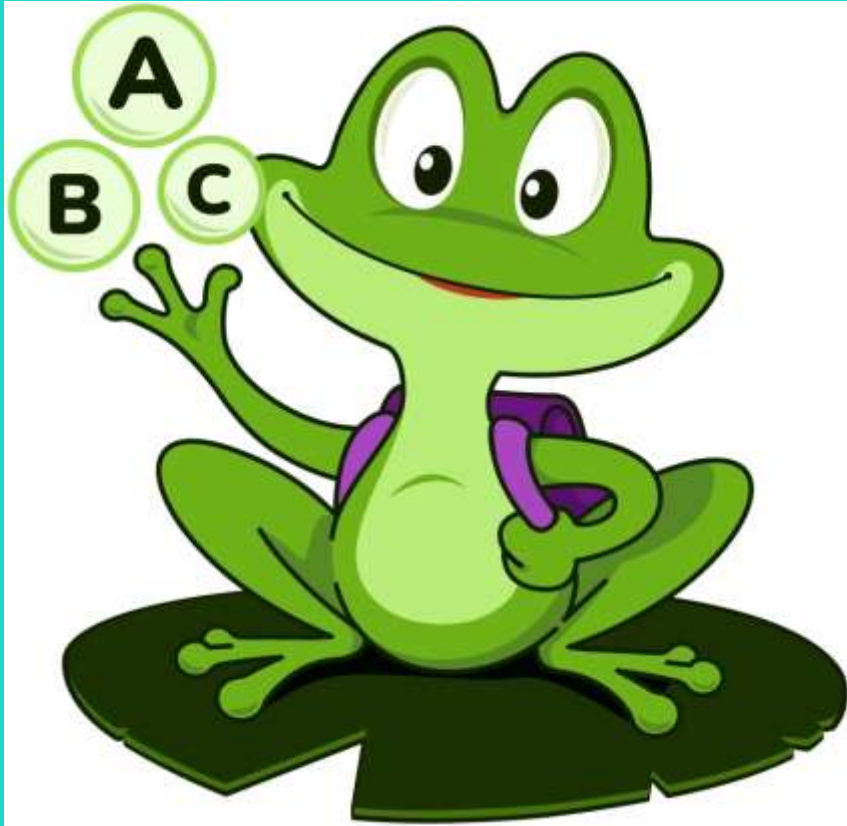
Workshop. 'Long-life ScienceL2: a training course for teachers about STEM and CLIL for bilingual education', SeLFiE European project



Co-funded by the  
Erasmus+ Programme  
of the European Union







Testing your qualifications  
as guardians of the sea

**Froggy Jumps**



<https://es.educaplay.com/recursos-educativos/12550349-your-guardians-of-the-sea.html>

# Asking question about the richness of the ocean ...and the life!

1 Which is the name of this attractive fish?

a) Red lipped fish

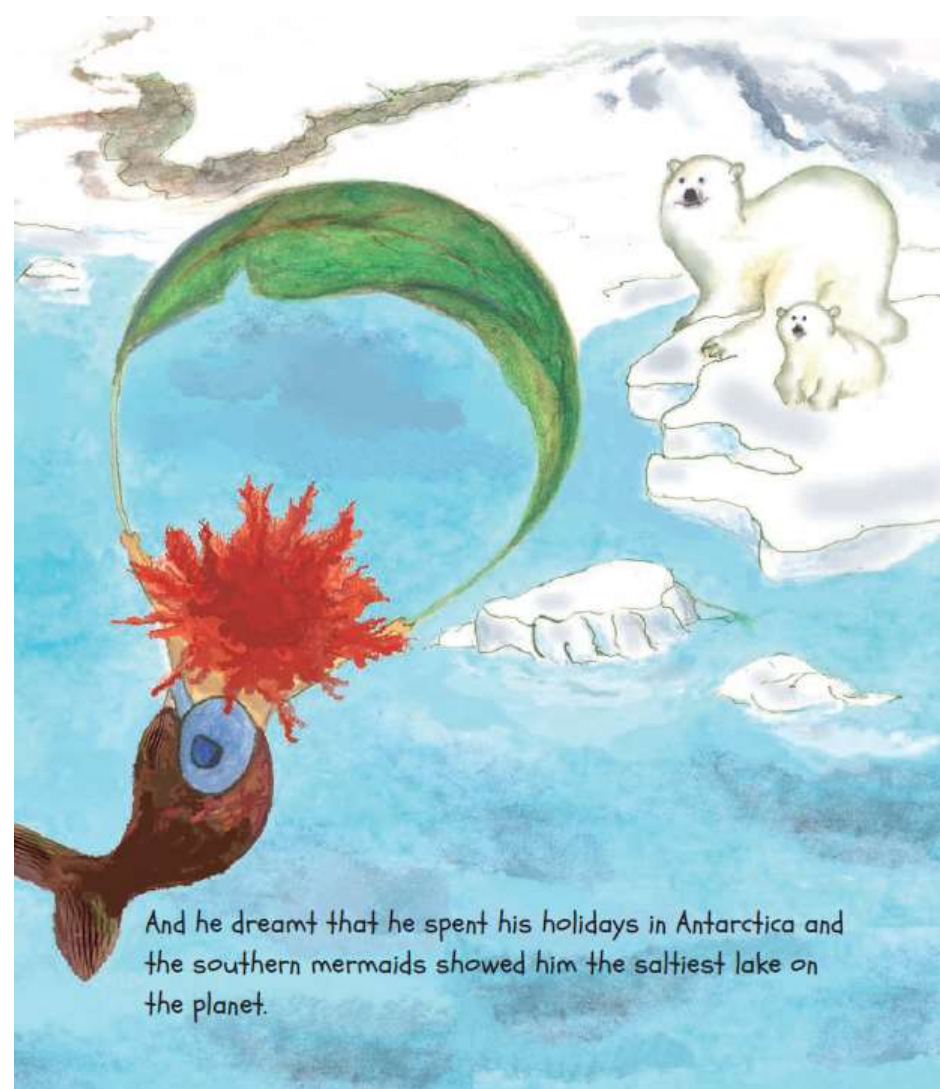
b) Batfish

c) Batman



2 Which is the name of the saltiest lake in the world?

- a) Dead Sea (Mar Muerto)
- b) Assal
- c) Don Juan Pond



And he dreamt that he spent his holidays in Antarctica and the southern mermaids showed him the saltiest lake on the planet.

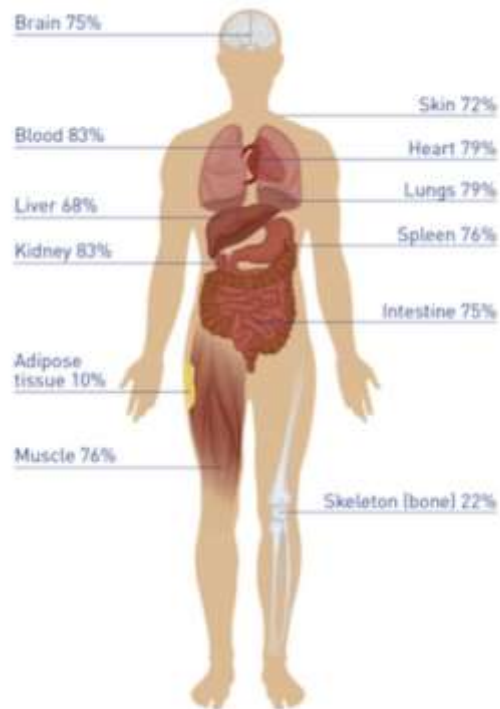
This hypersaline pond (1.3 times greater salinity than the Dead Sea) is located in the McMurdo Dry Valleys of Antarctica. It was discovered in 1961 and this area is investigated because is very similar to Mars. The pond's maximum depth was only about 30 cm (12 inches) and has been decreasing steadily in size. The salt is not like ocean water salt, which is sodium chloride, the type you put on food. This is Calcium Chloride and scientists are not sure why it accumulates here. The lack of other minerals, like Magnesium and Potassium, which are expected to be there, also has scientists perplexed.

3 Which part of the human body has a higher percentage of water: muscles, brain or kidneys?

a) Brain

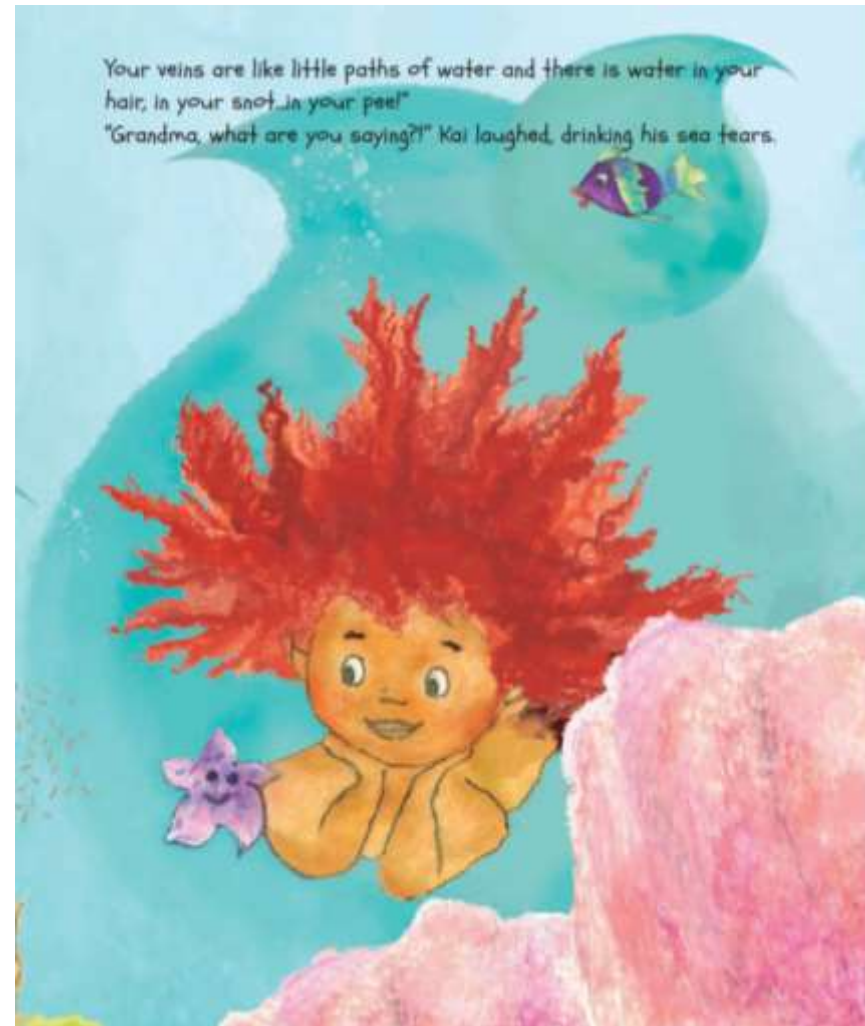
b) Muscles

c) Kidneys



**Figure 1. Water composition of tissues and organs by weight.**

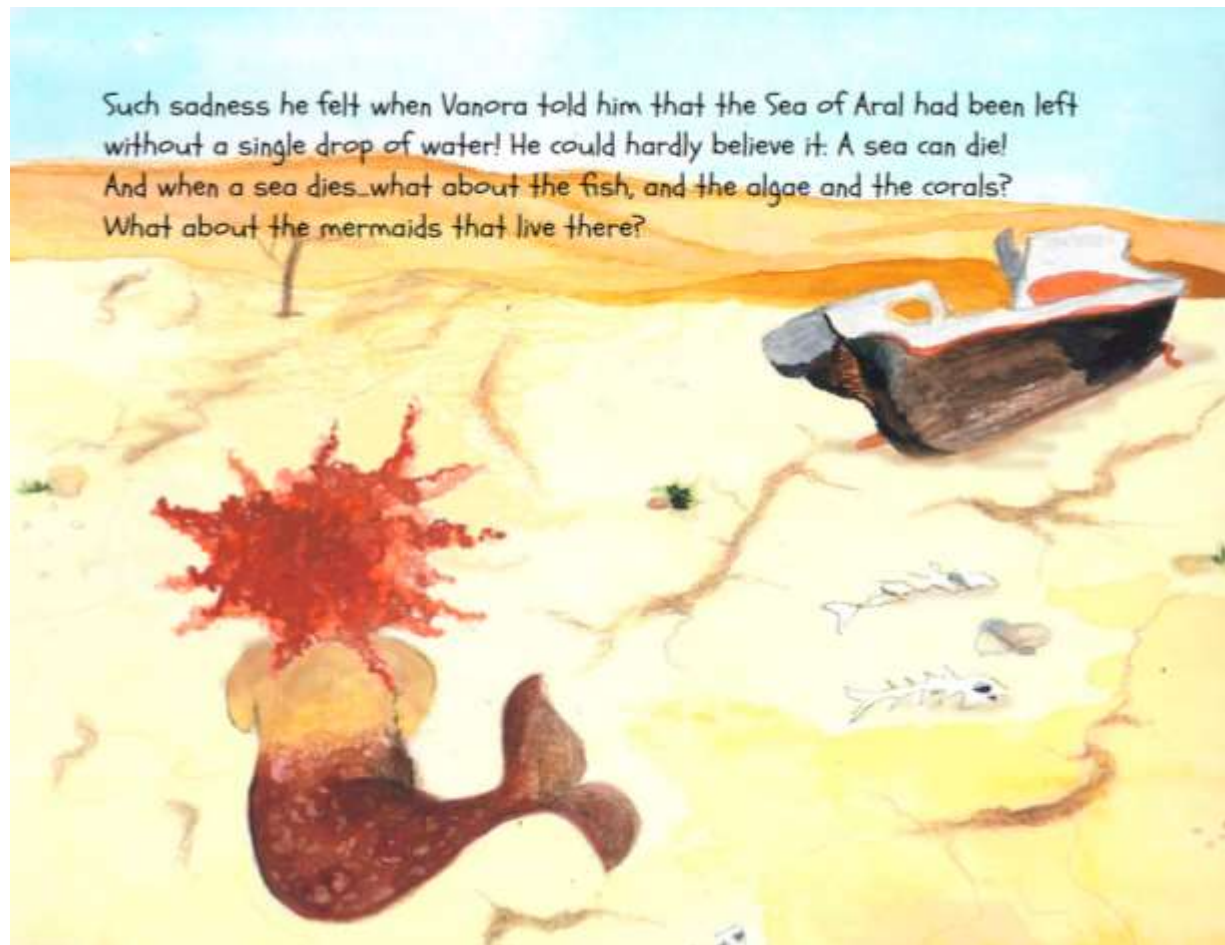
*Adapted from Pivarnik and Palmer 1994.*



Your veins are like little paths of water and there is water in your hair, in your snot...in your peel!"  
"Grandma, what are you saying?!" Kai laughed, drinking his sea tears.

#### 4 Which phrase is wrong concerning the Aral Sea?

- a) It was one of the once-large saltwater lake of Central Asia
- b) It was placed in Africa
- c) It was a freshwater lake



5 Which is the correct proposition?

- a) Pink and gray dolphins are relatives
- b) Boto is the largest species of river dolphins
- c) All dolphins are pink at birth

The Amazon river dolphin, also known as the Boto or pink river dolphin, is a species of toothed whale that lives only in freshwater. Adult males reach a maximum length and weight of 2.55 m and 185 Kg, females reach 2.15 m and 150 Kg.

The body color varies with age. Newborns and the young have a dark grey tint, which in adolescence transforms into light grey, and in adults turns pink. Males tend to be pinker than females.



6 The tasks organizer included in Guardians of the sea is called

- a) Canva
- b) Kanba
- c) Kanban



7 Which of the following items can be easily recycled?

- a) Tubes of toothpaste
- b) Potato chips bag
- c) Bubble wrap



<https://blog.nationalgeographic.org/2018/04/04/7-things-you-didnt-know-about-plastic-and-recycling/>

# The challenges of plastic recycling!



8 Kai was shocked when Vanora told him about the death of a lake

a) It was the Lake Assal

b) The Sea of Aral

c) The Lake Chad

Lake Assal is a crater lake in central-western Djibouti, a country placed in Africa. It is a saline lake that lies 155 m below sea level in the Afar Triangle, making it the lowest point on land in Africa and the third-lowest point on Earth after the Sea of Galilee and the Dead Sea

